

Use of Optical Mark Scanners

John Boorman

President, EBOPRAS

Secretary, UEMS-CESMA

Chairman, EBOPRAS Exam Board

UEMS-CESMA meeting Brussels 20/11/2010

MCQ Exam - paper or computer based?

CBT – computer based testing

- multiple local centres

- appropriate security checks needed

- marking is done by software program

- more expensive to run

- reduced travel costs for candidates

- may only be appropriate for larger exams

- ISB in UK&I moving to this format

MCQ Exam - steps

Venue(s)

single or multiple venues possible
hotel, university, hospital etc.

Single easier to administer

Multiple easier for candidates

EBOPRAS MCQ Examination held twice a year in Brussels



MCQ Exam - steps

Venue(s)

Invigilators

may be specialist or lay

specialist may be helpful in translingual
exam to explain words

MCQ Exam - steps

Venue(s)

Invigilators

Marking

By hand – tedious, error-prone

By scanner

fast

accurate

analysis reports available

start-up costs (marksheets, decode software)


Exam Answer sheet

European Board of Plastic, Reconstructive & Aesthetic Surgery

MARKING INSTRUCTIONS

This document is designed to be machine readable.

Select the one most appropriate answer.

- Mark like this 
- Please use the pencil provided
- Please do NOT tick, cross or circle
- If you make a mistake use the eraser
- Do NOT crease or fold this sheet

Answer Sheet

Name

Date

Candidate Number

<input type="text"/>	<input type="text"/>	<input type="text"/>	<input type="text"/>	<input type="text"/>
----------------------	----------------------	----------------------	----------------------	----------------------

c0> c0> c0> c0> c0>
c1> c1> c1> c1> c1>
c2> c2> c2> c2> c2>
c3> c3> c3> c3> c3>
c4> c4> c4> c4> c4>
c5> c5> c5> c5> c5>
c6> c6> c6> c6> c6>
c7> c7> c7> c7> c7>
c8> c8> c8> c8> c8>
c9> c9> c9> c9> c9>

1 cA> cB> cC> cD> cE>

2 cA> cB> cC> cD> cE>

3 cA> cB> cC> cD> cE>

4 cA> cB> cC> cD> cE>

5 cA> cB> cC> cD> cE>

6 cA> cB> cC> cD> cE>

7 cA> cB> cC> cD> cE>

8 cA> cB> cC> cD> cE>

9 cA> cB> cC> cD> cE>

26 cA> cB> cC> cD> cE>

27 cA> cB> cC> cD> cE>

28 cA> cB> cC> cD> cE>

29 cA> cB> cC> cD> cE>

30 cA> cB> cC> cD> cE>

31 cA> cB> cC> cD> cE>

32 cA> cB> cC> cD> cE>

33 cA> cB> cC> cD> cE>

34 cA> cB> cC> cD> cE>

51 cA> cB> cC> cD> cE>

52 cA> cB> cC> cD> cE>

53 cA> cB> cC> cD> cE>

54 cA> cB> cC> cD> cE>

55 cA> cB> cC> cD> cE>

56 cA> cB> cC> cD> cE>

57 cA> cB> cC> cD> cE>

58 cA> cB> cC> cD> cE>

59 cA> cB> cC> cD> cE>

76 cA> cB> cC> cD> cE>

77 cA> cB> cC> cD> cE>

78 cA> cB> cC> cD> cE>

79 cA> cB> cC> cD> cE>

80 cA> cB> cC> cD> cE>

81 cA> cB> cC> cD> cE>

82 cA> cB> cC> cD> cE>

83 cA> cB> cC> cD> cE>

84 cA> cB> cC> cD> cE>

Automated sheet feed scanner



New Scanner

6kg weight

Reads pencil or ink

Automatic sheet feed

Better discrimination of erased marks

Carry case for air transportation

PC connection only – not Mac



Correct Answers

Exam Name EBOPRAS MCQ 21 - 2009

Quantity of Responses 100 **Number of First Question** 1

Single Correct Answer
 IFD style Questions

Scores Variable

Correct 1.00 Variable 0.00

Question	A	B	C	D	E
1	1.00	0.00			
2	0.00	0.00			
3	0.00	0.00			
4	0.00	1.00			
5	0.00	0.00	0.00	1.00	0.00
6	0.00	0.00	0.00	0.00	1.00
7	0.00	1.00	0.00	0.00	0.00

Scanning

	Accepted	Rejected
Sheets Scanned	3	0






Sheet Accepted

Waiting

Insert a sheet in the scanner.

Done

Variable Void 0.00

 Capture
  Import
  OK
  Cancel
  Help

MCQ Exam - steps

Venue(s)

Invigilators

Marking

Validation

Uses analysis report as basis

Statistical & Clinical aspects to the performance of questions.

This cannot be done by lay people

European Board of Plastic Surgery
 Speedwell Multiquest Report
 File: EBOPRAS 2009

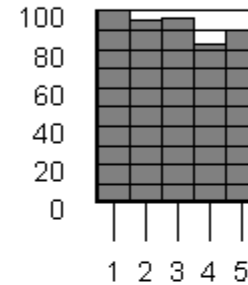
**MCQ
analysis**

Item Analysis Report (Response Order)
 EBOPRAS MCQ 21 - 2009

Exam statistics: Mean: 69.3 (72.2%) St. Dev.: 9.19 (9.57%) Candidates: 97 KR20: 0.818

Question 46

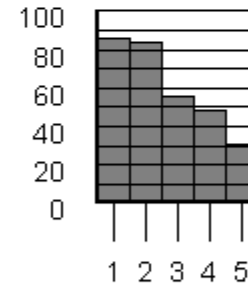
		Thirds	Right	Wrong	R-W	Void
Mean Score:	0.928	% All	92.8	7.2	85.6	0.0
33% Item Discrimination:	0.087	Upper	96.9	3.1	93.8	0.0
Point Biserial:	0.131	Lower	88.1	11.9	76.3	0.0
Correct Answer:	D	Facility	92.8			



% Answer Frequency							
Multi	Blank	A	B	C	D	E	
0.0	0.0	4.1	1.0	2.1	92.8	0.0	

Question 47

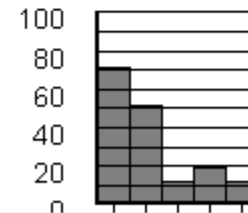
		Thirds	Right	Wrong	R-W	Void
Mean Score:	0.608	% All	60.8	39.2	21.6	0.0
33% Item Discrimination:	0.400	Upper	81.3	18.8	62.5	0.0
Point Biserial:	0.390	Lower	41.3	58.7	-17.5	0.0
Correct Answer:	E	Facility	60.8			



% Answer Frequency							
Multi	Blank	A	B	C	D	E	
0.0	0.0	29.9	0.0	5.2	4.1	60.8	

Question 48

		Thirds	Right	Wrong	R-W	Void
Mean Score:	0.330	% All	33.0	67.0	-34.0	0.0
33% Item Discrimination:	0.538	Upper	65.6	34.4	31.3	0.0
Point Biserial:	0.413	Lower	11.9	88.1	-76.3	0.0
Correct Answer:	B	Facility	33.0			



% Answer Frequency							
Multi	Blank	A	B	C	D	E	
0.0	0.0	0.0	33.0	0.0	0.0	0.0	

MCQ Exam - steps

Venue(s)

Invigilators

Marking

Validation

Passmark setting

For a competence exam, the modified Angoff procedure is the best method. This requires the examiners to be specialists. This can be done in advance of examination.

Basing mark purely on statistics
(eg mean – 1SD, or X% fail) not appropriate

MCQ Exam - steps

Venue(s)

Invigilators

Marking

Validation

Passmark setting

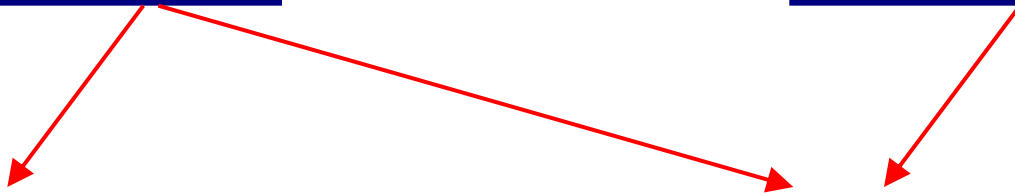
Results can be issued

Single site

Many sites

On-site scanner

Remote scanner



On-site scanning

Cost to purchase - £5000

OR

Rental £ 250/exam

onsite attendance £ 700/day

plus travel etc.

(Prices exclude VAT)



Scanning & processing bureau service

Cost to purchase - nil

Scanning £ 500/day

Analysis services £ 500/day

(Prices exclude VAT)



Single site

Many sites

On-site scanner

Remote scanner

On-site, same day
Reports available
Validation of questions
Setting passmark
Issue results

Delays process
Who validates?
Who sets passmark?

Needs an examiners'
meeting

Thank you for your attention

