

Use of a Portable Scanner

John Boorman

President, EBOPRAS

Secretary, UEMS-CESMA

Chairman, EBOPRAS Exam Board

UEMS-CESMA meeting Brussels 21/11/2009

MCQ Exam - steps

Venue, Candidates & Invigilators

Marking

Validation of questions

Setting passmark (Angoff etc.)

Results

EBOPRAS MCQ Examination



EBOPRAS MCQ Examination



Timetable

09:00 – 12:00 MCQ Exam

100 Questions

100 Candidates

16:00 – Results announced

How is this achieved?

Venue, Candidates & Invigilators

Single European Venue (Brussels)
Examiners invigilate
Candidate answers on OMR sheet


Exam Answer sheet

European Board of Plastic, Reconstructive & Aesthetic Surgery

MARKING INSTRUCTIONS

This document is designed to be machine readable.

Select the one most appropriate answer.

- Mark like this 
- Please use the pencil provided
- Please do NOT tick, cross or circle
- If you make a mistake use the eraser
- Do NOT crease or fold this sheet

Answer Sheet

Name

Date

Candidate Number

<input type="text"/>	<input type="text"/>	<input type="text"/>	<input type="text"/>	<input type="text"/>
----------------------	----------------------	----------------------	----------------------	----------------------

c0 c0 c0 c0 c0
c1 c1 c1 c1 c1
c2 c2 c2 c2 c2
c3 c3 c3 c3 c3
c4 c4 c4 c4 c4
c5 c5 c5 c5 c5
c6 c6 c6 c6 c6
c7 c7 c7 c7 c7
c8 c8 c8 c8 c8
c9 c9 c9 c9 c9

1 cA cB cC cD cE

2 cA cB cC cD cE

3 cA cB cC cD cE

4 cA cB cC cD cE

5 cA cB cC cD cE

6 cA cB cC cD cE

7 cA cB cC cD cE

8 cA cB cC cD cE

9 cA cB cC cD cE

26 cA cB cC cD cE

27 cA cB cC cD cE

28 cA cB cC cD cE

29 cA cB cC cD cE

30 cA cB cC cD cE

31 cA cB cC cD cE

32 cA cB cC cD cE

33 cA cB cC cD cE

34 cA cB cC cD cE

51 cA cB cC cD cE

52 cA cB cC cD cE

53 cA cB cC cD cE

54 cA cB cC cD cE

55 cA cB cC cD cE

56 cA cB cC cD cE

57 cA cB cC cD cE

58 cA cB cC cD cE

59 cA cB cC cD cE

76 cA cB cC cD cE

77 cA cB cC cD cE

78 cA cB cC cD cE

79 cA cB cC cD cE

80 cA cB cC cD cE

81 cA cB cC cD cE

82 cA cB cC cD cE

83 cA cB cC cD cE

84 cA cB cC cD cE

Answer Sheet

Name

Your name

Date

12/09/09

Candidate Number

0 9 0 8 1

0 0 0

1 1 1 1

2 2 2 2 2

3 3 3 3 3

4 4 4 4 4

5 5 5 5 5

6 6 6 6 6

7 7 7 7 7

8 8 8 8 8

9 9 9 9

26 A B C D E

27 A B C D E

28 A B C D E

29 A B C D E

30 A B C D E

31 A B C D E

32 A B C D E

33 A B C D E

34 A B C D E

51 A B C D E

52 A B C D E

53 A B C D E

54 A B C D E

55 A B C D E

56 A B C D E

57 A B C D E

58 A B C D E

59 A B C D E

76 A B C D E

77 A B C D E

78 A B C D E

79 A B C D E

80 A B C D E

81 A B C D E

82 A B C D E

83 A B C D E

84 A B C D E

How is this achieved?

Marking

OMR Scanner used to read answers
If ambiguous, hand checked

The Present Scanner

Manual sheet feed & Serial Connector







Correct Answers

Exam Name EBOPRAS MCQ 21 - 2009

Quantity of Responses 100 **Number of First Question** 1

Single Correct Answer
 IFD style Questions

Scores Variable

Correct 1.00

Question	A	B			
1	1.00	0.00			
2	0.00	0.00			
3	0.00	0.00			
4	0.00	1.00			
5	0.00	0.00	0.00	1.00	0.00
6	0.00	0.00	0.00	0.00	1.00
7	0.00	1.00	0.00	0.00	0.00

Variable

Void 0.00

Scanning






	Accepted	Rejected
Sheets Scanned	3	0

Sheet Accepted

Waiting

Insert a sheet in the scanner.

Done

 Capture
  Import
  OK
  Cancel
  Help

How is this achieved?

Validation of questions

Can begin immediately
Examiner/invigilators present
Multiquest or similar software

European Board of Plastic Surgery
 Speedwell Multiquest Report
 File: EBOPRAS 2009

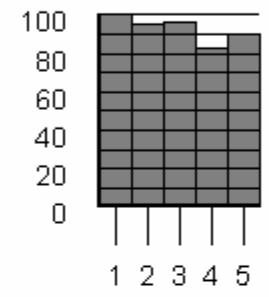
**MCQ
analysis**

Item Analysis Report (Response Order)
 EBOPRAS MCQ 21 - 2009

Exam statistics: Mean: 69.3 (72.2%) St. Dev.: 9.19 (9.57%) Candidates: 97 KR20: 0.818

Question 46

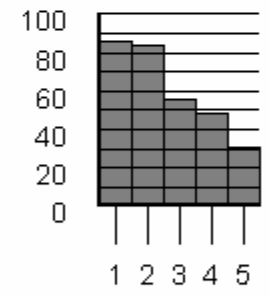
		Thirds	Right	Wrong	R-W	Void
Mean Score:	0.928	% All	92.8	7.2	85.6	0.0
33% Item Discrimination:	0.087	Upper	96.9	3.1	93.8	0.0
Point Biserial:	0.131	Lower	88.1	11.9	76.3	0.0
Correct Answer:	D	Facility	92.8			



% Answer Frequency							
Multi	Blank	A	B	C	D	E	
0.0	0.0	4.1	1.0	2.1	92.8	0.0	

Question 47

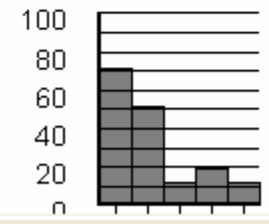
		Thirds	Right	Wrong	R-W	Void
Mean Score:	0.608	% All	60.8	39.2	21.6	0.0
33% Item Discrimination:	0.400	Upper	81.3	18.8	62.5	0.0
Point Biserial:	0.390	Lower	41.3	58.7	-17.5	0.0
Correct Answer:	E	Facility	60.8			



% Answer Frequency							
Multi	Blank	A	B	C	D	E	
0.0	0.0	29.9	0.0	5.2	4.1	60.8	

Question 48

		Thirds	Right	Wrong	R-W	Void
Mean Score:	0.330	% All	33.0	67.0	-34.0	0.0
33% Item Discrimination:	0.538	Upper	65.6	34.4	31.3	0.0
Point Biserial:	0.413	Lower	11.9	88.1	-76.3	0.0
Correct Answer:	B	Facility	33.0			



% Answer Frequency							
Multi	Blank	A	B	C	D	E	
0.0	0.0	0.0	33.0	0.0	0.0	0.0	

How is this achieved?

Setting passmark (Angoff etc.)

Done in parallel with exam

Results

Available same day

Good for candidates

Better for organising Part 2

Candidates know

Collect payment on day

Give out visa letters

No need for extra meeting

New Scanner

USB connection

6kg weight

Reads pencil or ink

Automatic sheet feed

Better discrimination of erased marks

Carry case for air transportation

PC connection only – not Mac

Could be shared among boards

Cost ~ €5500.00 with case



Thank you for your attention

